



Equity Toward
Action: Taking
Collaborative Small
Steps for
Sustainable Change

Disclaimer

This information is being provided as part of the Effective Educator Development Program administered by the U.S. Department of Education. Information and materials mentioned or shown during this presentation are provided as resources and examples for the viewer's convenience. Their inclusion is not intended as an endorsement by the U.S. Department of Education.

In addition, the instructional practices and assessments discussed or shown in these presentations are not intended to mandate, direct, or control a State's, local educational agency's, or school's specific instructional content, academic achievement system and assessments, curriculum, or program of instruction. States and local programs are free to use any instructional content, achievement system and assessments, curriculum, or program instruction that they wish, insofar as they support the goals and objectives of the Effective Educator Development Program, as authorized.

We Are...



Amir Tusher
Assistant Principal
Community Health Academy
of the Heights
tusher@mychah.org



Rebecca Stanton
ENL Teacher
Community Health Academy
of the Heights
stanton@mychah.org



Suzanne Pratt
Co-Director, TR@TC
Teachers College, Columbia
University
sp2801@tc.edu

Who's in the room?

Raising the Bar: Transforming Education through Equity in Action

EED's Definition of Equity

“Equity is the proportional distribution of desirable outcomes and resources across groups. This means that an individual’s race, gender, socio-economic status, or sexual orientation, as examples, should not determine an individual’s educational, economic, social, or political opportunities.”

Yes

“Equity is the proportional distribution of desirable outcomes and resources across groups. This means that an individual’s race, gender, socio-economic status, or sexual orientation, as examples, should not determine an individual’s educational, economic, social, or political opportunities.”

Yes

And

“Equity is the proportional distribution of desirable outcomes and resources across groups. This means that an individual’s race, gender, socio-economic status, or sexual orientation, as examples, should not determine an individual’s educational, economic, social, or political opportunities.”

Yes

“Equity is the proportional distribution of desirable outcomes and resources across groups. This means that an individual’s race, gender, socio-economic status, or sexual orientation, as examples, should not determine an individual’s educational, economic, social, or political opportunities.”

And

What does it mean to develop concrete actions *toward* equity?

How do we strategically leverage *small* steps that move systems *toward* sustainable change?

How do we think critically about access to proportional distribution?

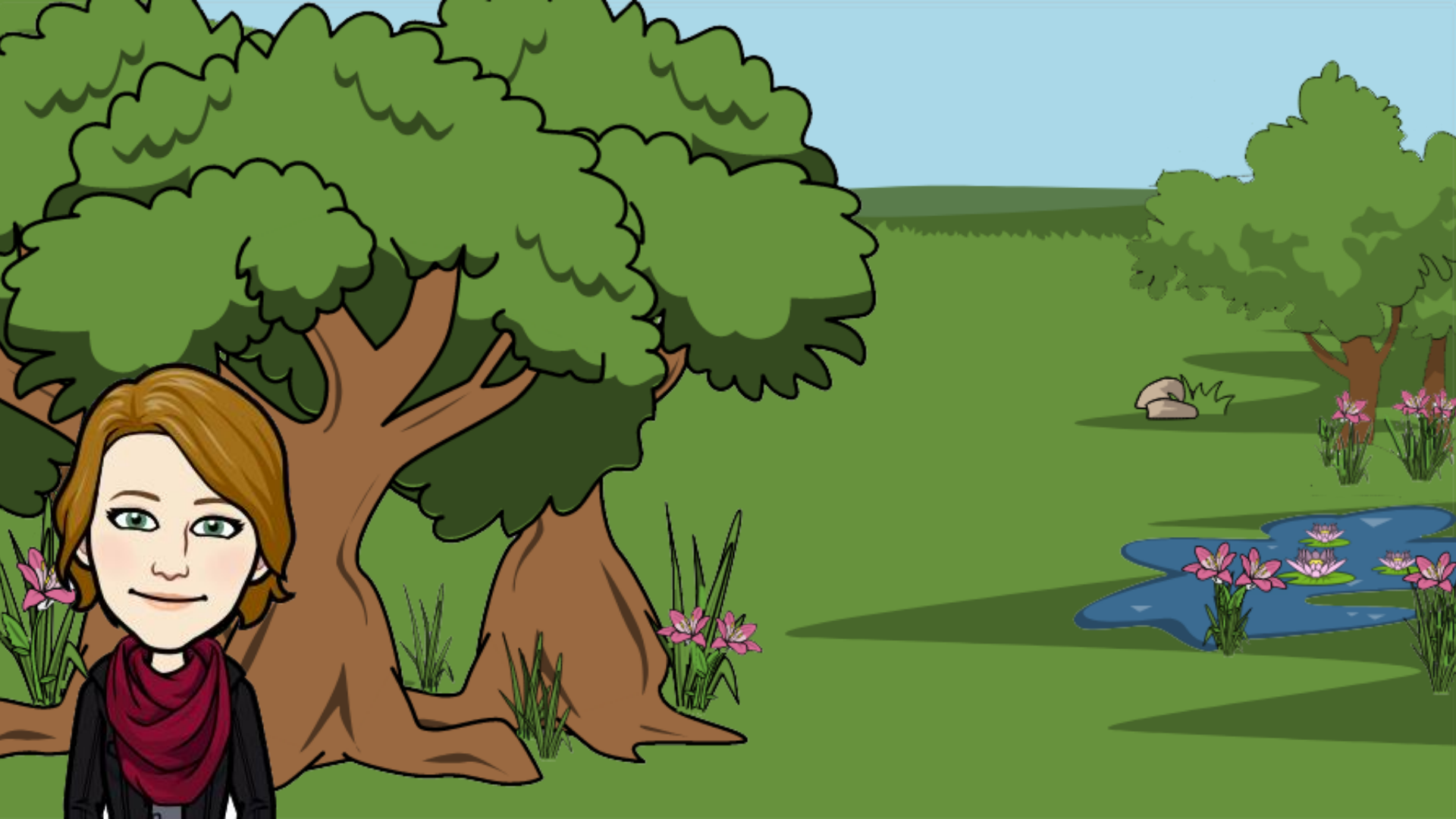
Layers of
Perspective...

...As We Identify
Overlapping
Need

Suzanne's Perspective







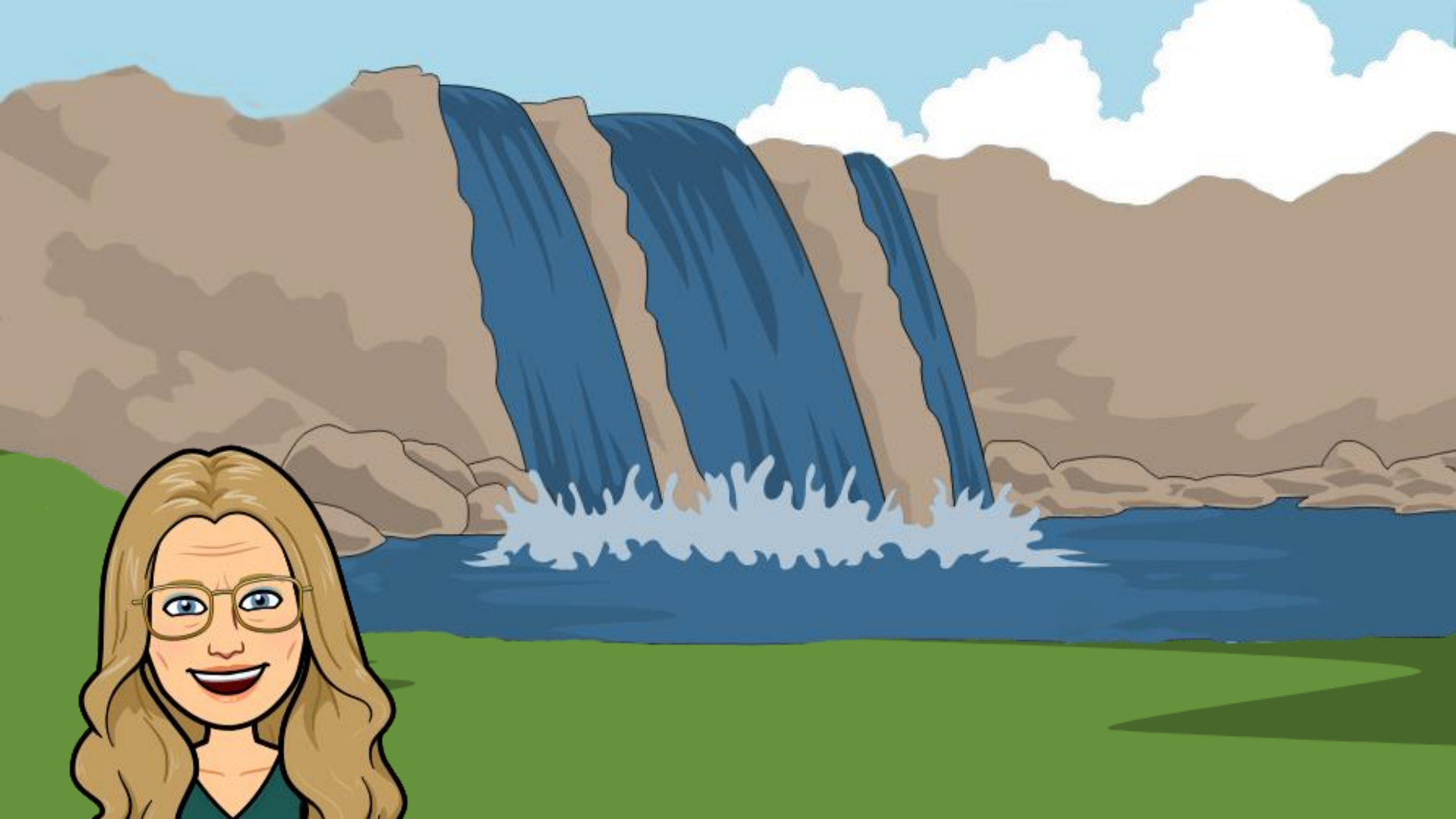




Rebecca's Perspective











Amir's Perspective











Our Aim...

...Grew Out of
Our Needs

“Teaching children to
read is an act of social
justice”

-Lisa Delpit

(Author of *Other People's Children*)



1



1

(A)
**School
Leader**

(D)
Student

(B)
Teacher

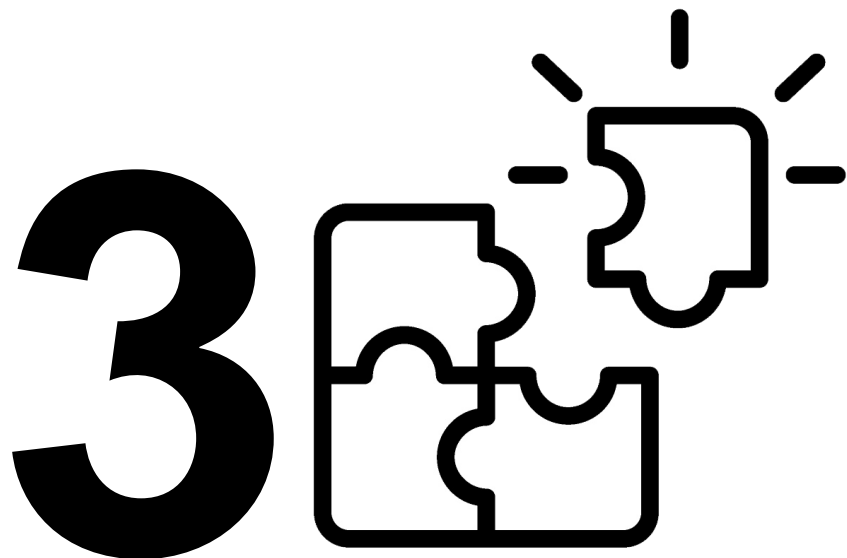
2

(C)
**Teacher
Educator**



1

(A)
School
Leader



2

(D)
Student

(B)
Teacher

(C)
Teacher
Educator

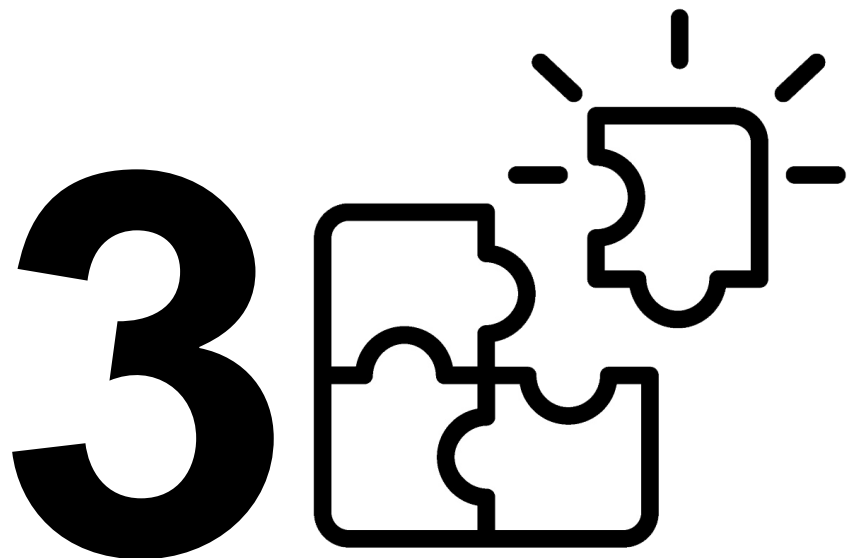
What do we notice
about the need
through this
perspective?

How are actions
aligning toward
addressing the
need?



1

(D)
School
Leader



(C)
Student

(A)
Teacher

2

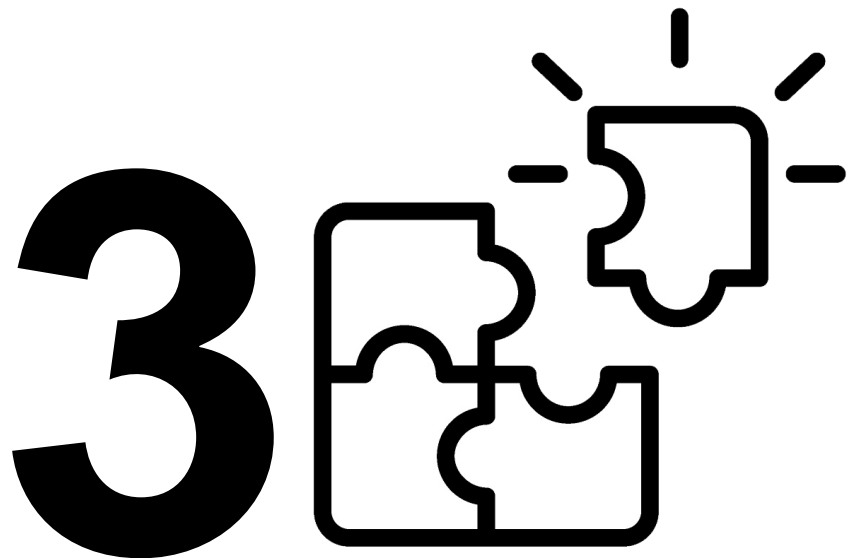
(B)
Teacher
Educator

What similarities and differences do you notice in the framing of the need across perspectives?



1

(C)
School
Leader



(B)
Student

(D)
Teacher

2

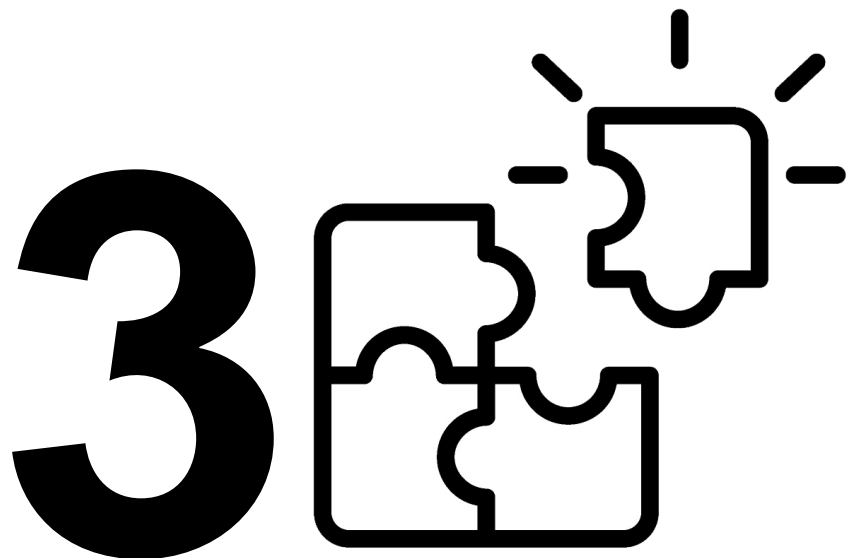
(A)
Teacher
Educator

How do actions
across groups
inform each other?



1

(B)
School
Leader



(A)
Student

(C)
Teacher

2

(D)
Teacher
Educator

When looking across
the data, what
potential principles of
action toward equity
do you see?

I see an opportunity...



Amir Tusher
Assistant Principal
Community Health Academy
of the Heights
tusher@mychah.org



Rebecca Stanton
ENL Teacher
Community Health Academy
of the Heights
stanton@mychah.org



Suzanne Pratt
Co-Director, TR@TC
Teachers College, Columbia
University
sp2801@tc.edu

Thank You!