

Please Rename Yourself

*Prepare before the
session starts*

1. Click the three dots in the top-right of your image.
2. Rename yourself using the following convention:

Firstname Lastname, Organization (Grant Type)

EXAMPLE:

Sam Smith, Cheerful University (TQP)





Cost Analysis

SEED Program Meeting – March 7, 2022



Reflection Question

Type your
response in the
chat box.

On a scale of 1 to 10, what is
your current comfort level
conducting a cost analysis
(1=no idea, 10=expert)?

Preparing for Engagement



Webcams
on!



Unmute
your line to
speak.



Use the **chat**
box for
questions
and
comments.



Use chat
box for
technical
issues.

Session Overview and Objectives

01

Learn from SEED grantees who are engaging in cost analysis for financial sustainability

02

Consider how principles of cost analysis might apply to your grant work

Session Facilitators

EED Technical Assistance Center



Sara Kraemer
Technical Assistance
Lead

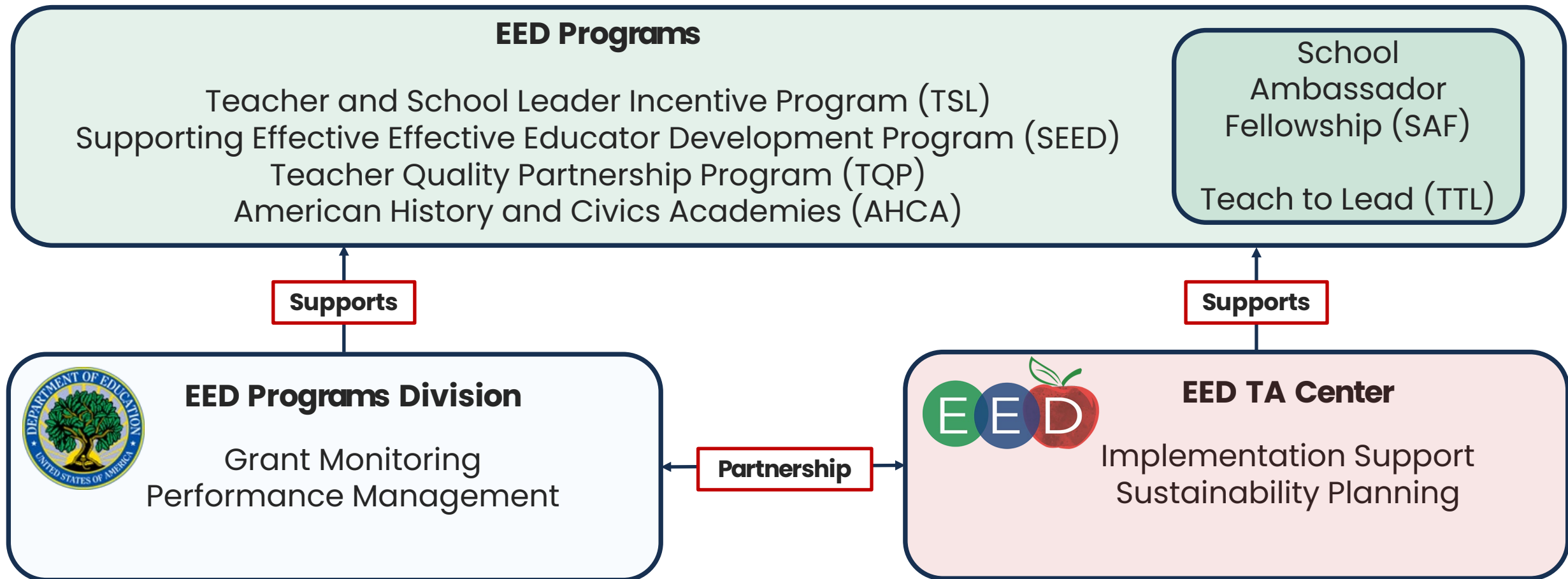


Amy Lamitie
Technical Assistance
Expert



Lynette Cameron
Project Manager

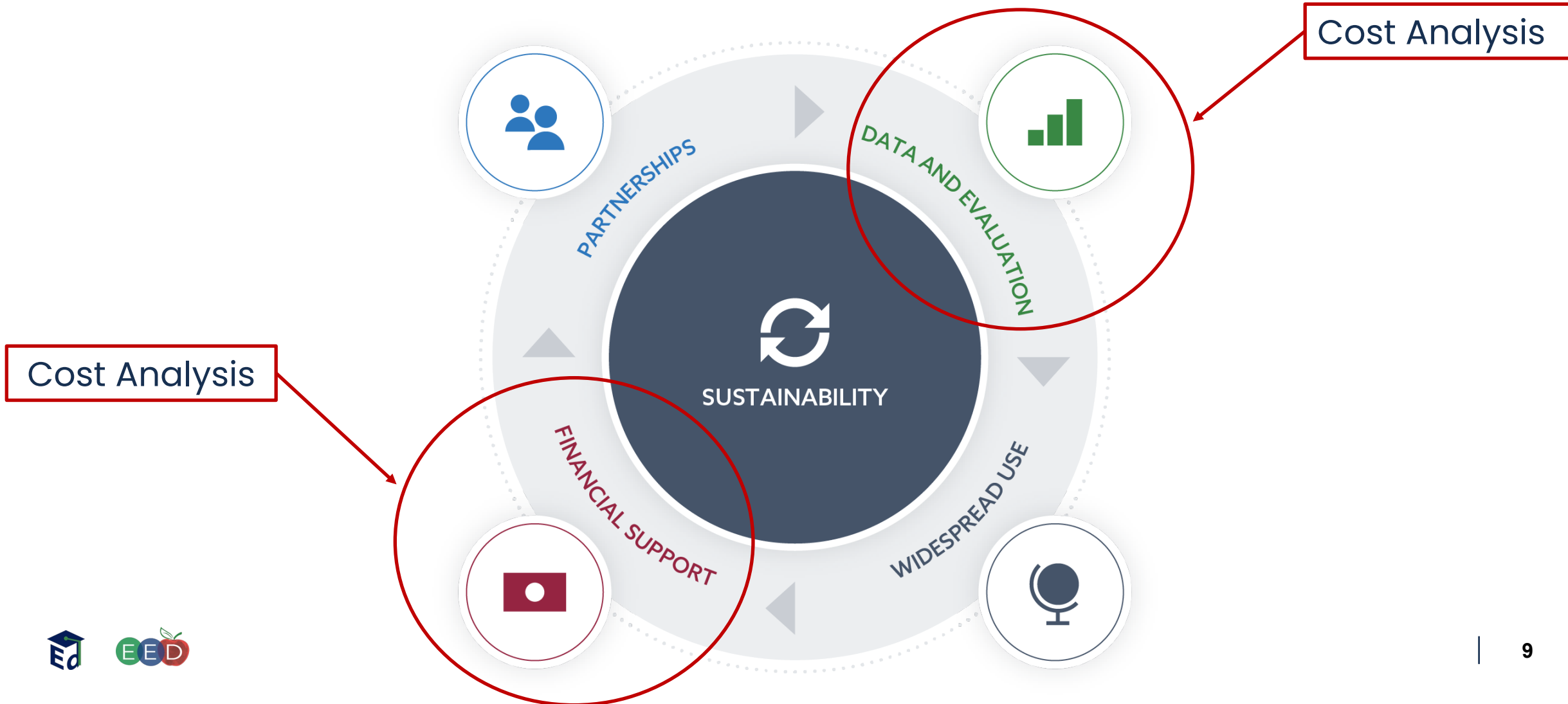
EED Programs Division and EED Technical Assistance (TA) Center



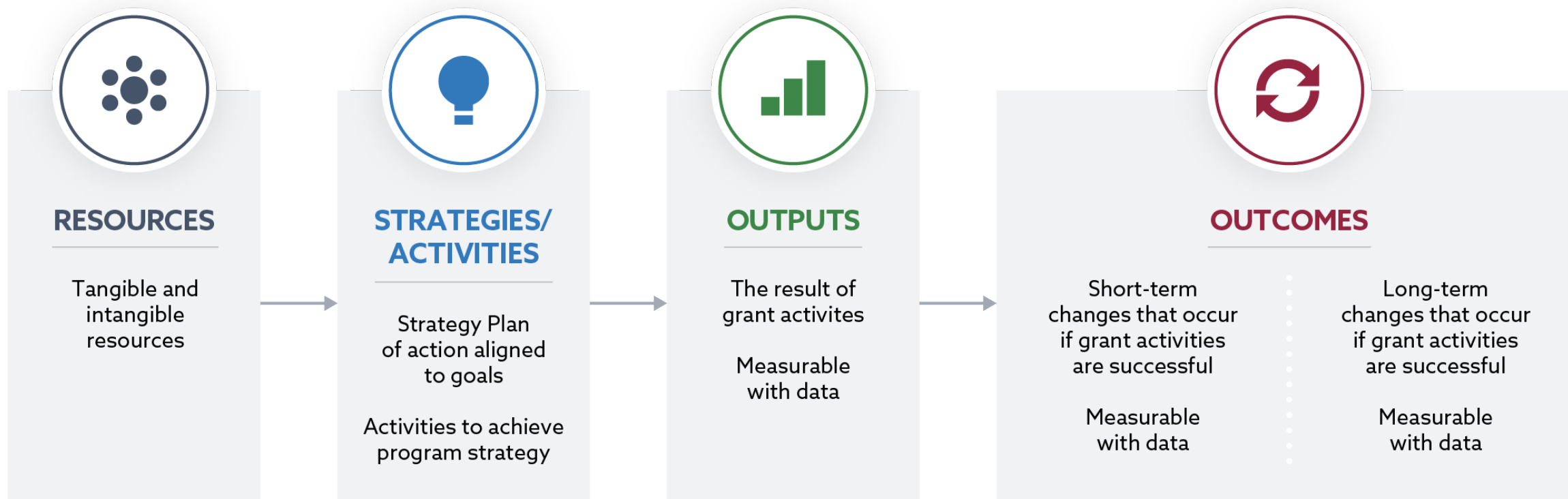
A large, light blue, stylized apple logo is centered in the background. It has a simple, rounded shape with a short stem and two leaves at the top. The logo is semi-transparent, allowing the white text to be clearly visible over it.

Cost Analysis and Sustainability Planning

Sustainability Planning Framework



Logic Model



A large, light blue, stylized apple logo is centered on a dark blue background. The apple has a simple, rounded shape with a small stem and two leaves at the top. The text "Cost Analysis Consultancy" is written in white, sans-serif font across the middle of the apple.

Cost Analysis Consultancy



Meet the Consultant

Dr. Robert Shand

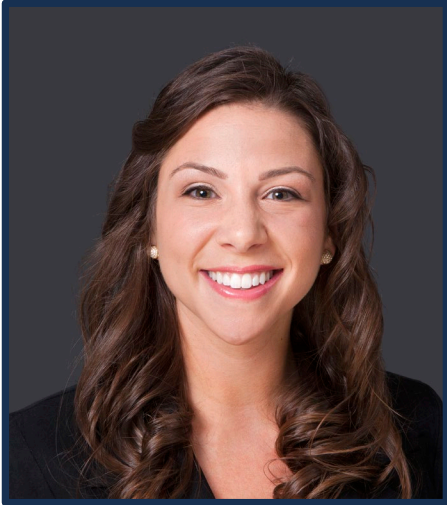
Assistant Professor, School of
Education, American University

 CAP Project

Consultancy Protocol – 30 minutes

1. Grantee Problem of Practice Statement (5 min)
2. Questions from Consultant (10 min)
3. Consultant Discussion (5 min)
4. Grantee Discussion (5 min)
5. Participant Reflections (5 min)

Virginia Commonwealth University Team



Dr. Kim McKnight
Director, Center for
Teacher Leadership



Dottie Walsh
Grants and Fiscal
Specialist



Dr. Jose Alcaine
Director of Research
Services and Assistant
Professor, School of
Education



Carla Dannouf
Finance Manager

VCU Problem of Practice

“How do we create a financially sustainable model for personnel, specifically a coordinator position, that supports both the higher education and school contexts within a shared cost model for a teacher residency?”

University of Florida Team



Dr. Nancy Ruzycki
Associate Professor



Halma Abubakar
Program Manager

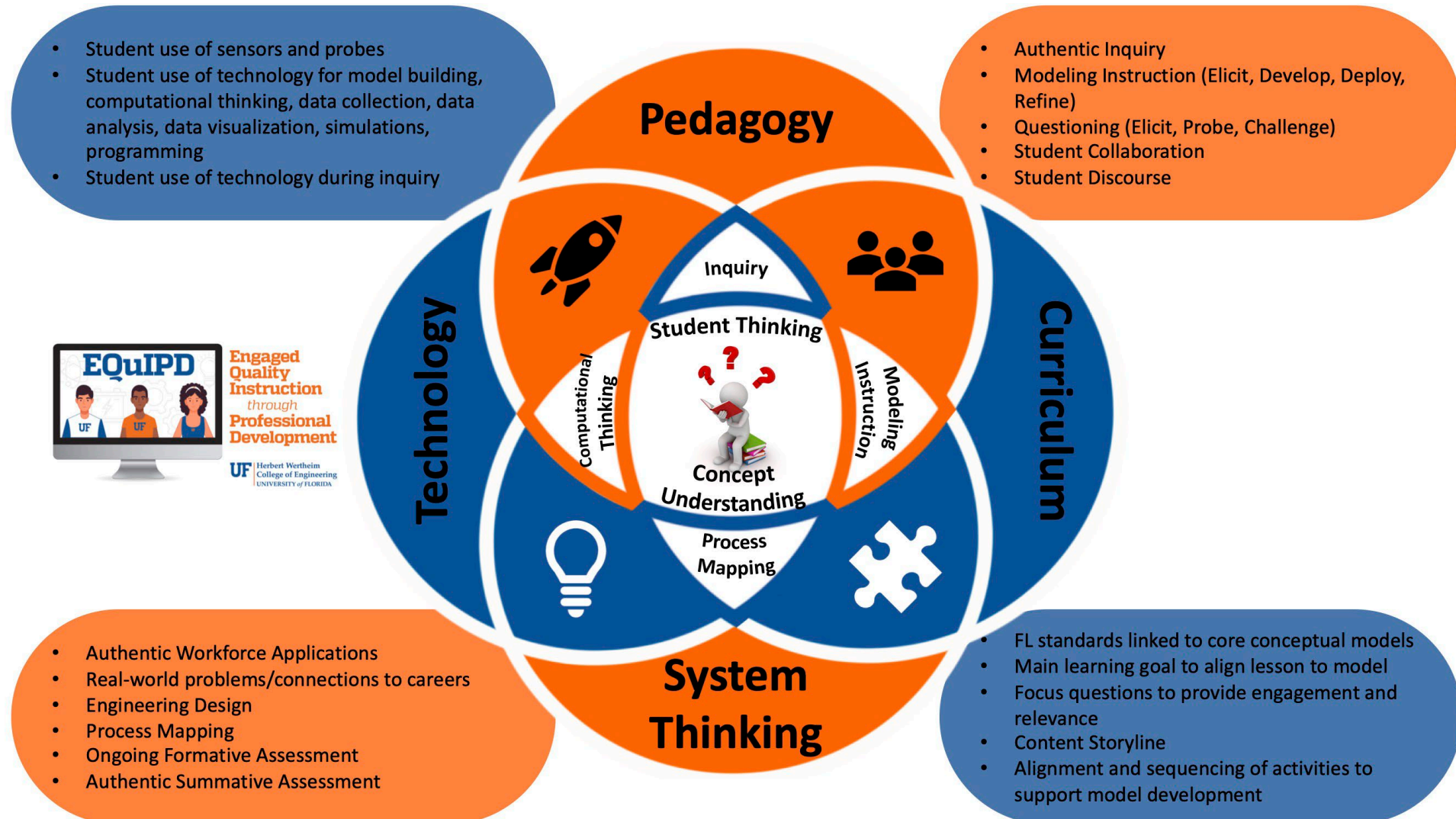


Dr. Krista Dulany
Research Assistant Scientist

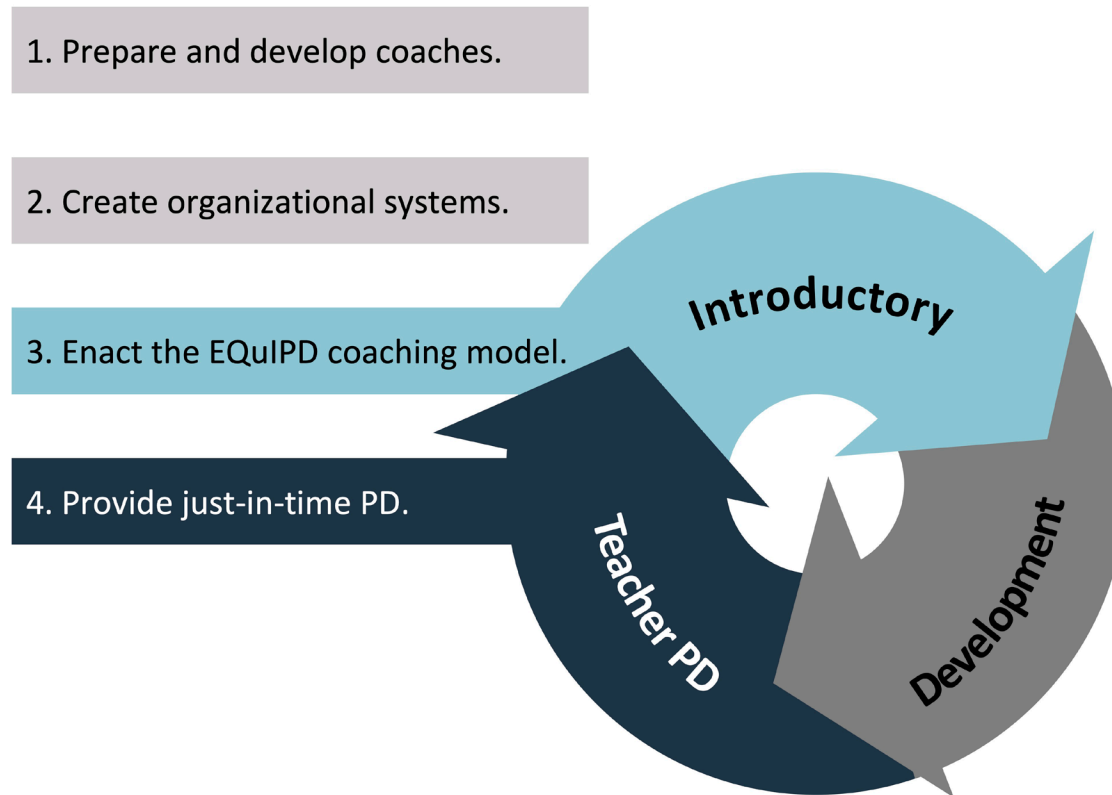
University of Florida Problem of Practice

“How do we design and cost out our program based on what districts are able to afford, understanding that each of the elements of the program is important for the creation of change to teacher practice?”

EQuIPD Model



EQuIPD Coaching Model



Reflection Questions

Type into the chat or come off mute

How will you apply the cost analysis insights from today to your own grant work?

A large, light blue, stylized apple logo is centered on the slide. It has a simple, rounded shape with a short stem and three leaves at the top. The logo is semi-transparent, allowing the white text to be clearly visible over it.

Cost Analysis Resources and Next Steps

CAP Project Resources

- <https://capproject.org>
- Help Desk Request – Talk with a CAP Project expert
- Cost analysis guidelines, templates, and tools
- Planning a cost analysis study

Sustainability Resources and Meeting



What this playlist is:

SEED Thought Lab:
*Wednesday,
March 30, 2022,
2-3pm EST
Using the Sustainability
Planning Playlist in your
SEED Grant*

We Value Your Feedback!

*Please fill out survey
using the QR code or click
the link in the chat*



Thank you!

How to Contact Us

U.S. Dept. of Education

Program Officers and Group Leaders

- Policy questions
- Project changes
- Data updates and amendments
- Performance and financial management questions

Louis.Edwards@ed.gov

Orman.Feres@ed.gov

Mia.Howerton@ed.gov

Bryan.Hale@ed.gov

Christine.Miller@ed.gov

Cynthia.Obrien@ed.gov

Venitia.Richardson@ed.gov

Diana.Schneider@ed.gov

Patricia.Searles@ed.gov

EED TA Center

- Technical assistance needs and questions
- Peer connections
- Communities360 questions

EED-TA@aemcorp.com

support@grads360.org

On Communities360

EED Grantee Community

- FAQs, User Guide, and training material access
- Post discussion questions to engage with peers

EED-TA@aemcorp.com

We Value Your Feedback!

*Please fill out survey
using the QR code or click
the link in the chat*

